



## Community Policing Report - November 2016

### Bradford on Avon

Hello and welcome to your Community Policing report.

The Community Policing Team (CPT) model will be rolled-out across Wiltshire Police this autumn, starting with the county of Wiltshire on 17 October 2016 and followed by Swindon on 7 November 2016.

This follows a successful trial of the new model in Trowbridge, Warminster, Bradford on Avon, Westbury, Tisbury and Mere. I would like to thank everybody within the community for assisting us during this pilot and providing us with the feedback to enable the continued development of this new model. The structure and ways of working have developed over the last year and this is down to our continued review and also listening to the feedback from our partner agencies and community and this has enabled us to arrive where we are today. We are keen to also improve where possible and so this process will continue and I look forward to future evolutions.

CPT combines Neighbourhood Policing, Response teams and Local Crime Investigators so there is a “one team” approach to community policing. It means there is a bigger team of officers and police staff available to attend incidents and improves communication between teams and departments. It gives the public a better service because issues can potentially be resolved at the first point of contact (101 and 999 call-takers) and provides them with a named officer/police staff member who they will be able to keep in touch with during the investigation. It also encourages officers and staff to take more “ownership” of cases.

There will be seven Community Policing Teams: Swindon North, Swindon West, Swindon South, Wiltshire North, Wiltshire West, Wiltshire East and Wiltshire South.

Each Community Policing Team will be overseen by a Superintendent and will have an Inspector and a Deputy who directly lead that Community Policing Team. The team will be made up of a mix of police officers, community co-ordinators, PCSOs, civilian local crime investigators and Specials Constables.

We will be engaging with the public as the force wide roll-out commences and will welcome feedback about the new model. Please speak to your local officers to find out more or provide feedback, which you can also do at [feedback@wiltshire.police.uk](mailto:feedback@wiltshire.police.uk) You can also find out more, including videos and infographics explaining the new model, on our website <http://www.wiltshire.police.uk/information/community-policing-pilot>

[feedback@wiltshire.police.uk](mailto:feedback@wiltshire.police.uk)

## COMMUNITY MESSAGING

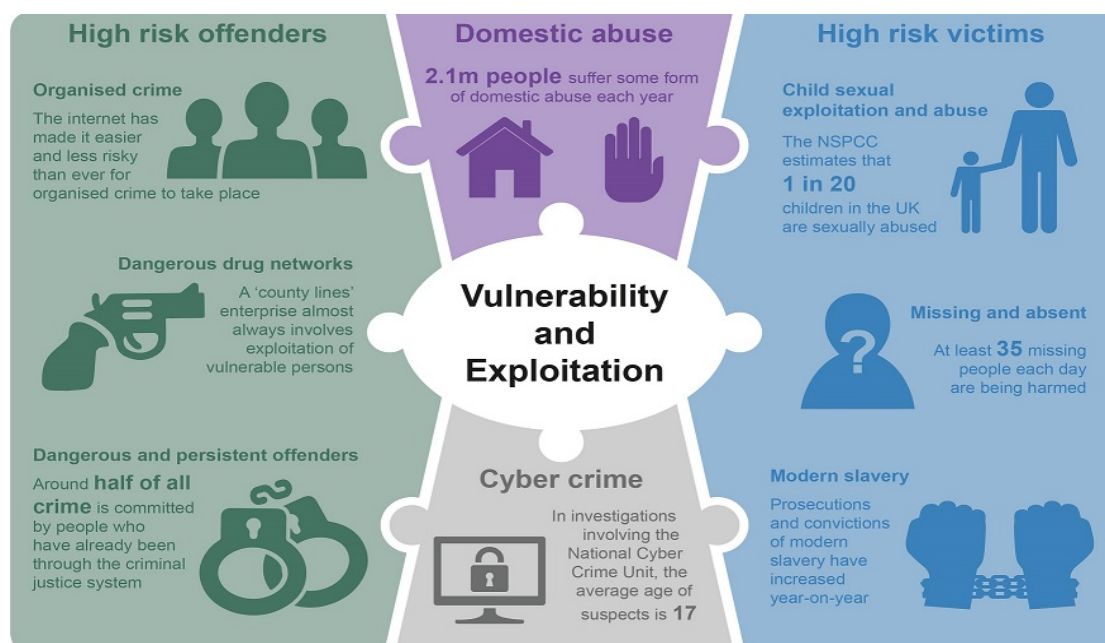
We have been talking a lot publically about Community Messaging over recent months and I have included the link below and would continue to encourage you to spread the message to your communities, encouraging as many people as possible to sign up. We have seen a 20% growth over the recent months and this is to be commended and I want to say thank you for this and the work you have done within your communities to assist us in getting the key messages out there to the right people at the right place at the right time. Please help us take this even further. We are continually reviewing the content of our messages, so if there is any feedback for us, please let us know.

<https://www.wiltsmessaging.co.uk/>

## CONTROL STRATEGY

Below is our control strategy for your reference. This focuses on where how we conduct our operational Policing based on the Police & Crime Plan. We will continue to align our resources with the threat/harm/risks presented in line with the control strategy.

- Domestic abuse / Cyber Crime / High risk offenders / High risk victims



## **CURRENT PRIORITIES/ SERIES/ EXCEPTIONS**

Crime Exceptions are where the volume of crime exceeds the levels we would expect over a specified period. This is based on evaluation of data, over like to like periods historically.

There were no crime exceptions in the area last month.

There are no current priorities in the area.

Whilst not an exception, we did see an increase in Burglary offences in the middle of October. One of these was linked to the vehicle which damaged the town bridge. We have subsequently arrested two local males on suspicion of a number of offences and they are currently on police bail.

We have pulled together some top tips to prevent becoming a victim of burglary:

- Always close and lock all windows and doors when leaving your home.
- Invest in a light timer and leave lights on inside your house in more than one room.
- Remove any cover for a burglar to work unseen, such as shrubbery, and give your neighbours every chance to spot something suspicious.
- Ensure valuable or sentimental items of jewellery are suitably insured.
- Take photographs of all such items (laid beside a ruler) and store these in a safe place.
- Register all valuable items on [www.immobilise.com](http://www.immobilise.com)
- Large quantities of cash should never be kept at home.
- Keep keys and valuables out of sight, and reach from cat flaps, letterboxes, and downstairs doors and windows.

For a detailed breakdown of the crime in your area visit...

**<https://www.police.uk/wiltshire/>**

Sector Head Insp 2517 Brain : [james.brain@wiltshire.pnn.police.uk](mailto:james.brain@wiltshire.pnn.police.uk)

Deputy Sector Head Ps 1801 Louis McCoy : [louis.mccoy@wiltshire.pnn.police.uk](mailto:louis.mccoy@wiltshire.pnn.police.uk)

[feedback@wiltshire.police.uk](mailto:feedback@wiltshire.police.uk)

## **POLICE COMMUNICATION**

### **In an emergency call 999**

Call 999 if you need an immediate response because:

- A crime is in progress.
- You or someone else is injured or there is a threat to life.
- A serious road traffic collision has taken place.
- Violence is being used.

For less urgent matters you can call **101**

Call 101 for less serious matters

- To report a crime or issue that does not require an immediate emergency response
- You or someone else are not in immediate danger
- You would like to speak to your local police officer
- You want to provide information about a crime

### **Visit a police station**

Crimes and road traffic collisions can be reported to our Enquiry office at Trowbridge, their opening hours are Monday to Friday 8.30 to 5.30, Saturdays 9.00 to 1.00, Sundays and Bank Holidays Closed.

**Stop a police officer or PCSO**

Although we cannot take reports of crime on the street we are happy to receive information and give advice.

**E-mail**

Your local officer can be contacted by e-mail [CPTWestWiltshire@wiltshire.pnn.police.uk](mailto:CPTWestWiltshire@wiltshire.pnn.police.uk)

**Website**

There are a number of forms available on [www.wiltshire.police.uk](http://www.wiltshire.police.uk) where you can pass information.

**Crimestoppers**

Information can be passed anonymously via Crimestoppers. They can be contacted at [crimestoppers.org.uk](http://crimestoppers.org.uk) or via telephone on 0800 555 111. Their website also provides useful information and crime prevention advice

**Facebook**

Each town within the Community Policing Team has its own Facebook page, on here you can find information about what has been happening in the area. We are unable to take reports of crime this through facebook.

**Community Messaging**

The police will put out information via Community Messaging, you will receive these messages if you are registered. You can also reply and give feedback to these messages.